

Porta Potty Locations for Saturday April 13, 2024

Location	Address	Porta Potties	Secondary Containment	Wash Stations
Christmas Hill Park	7050 Miller Ave, Gilroy	4 (*)		1
Gilroy Hot Springs	6801 Canada Rd, Gilroy	4	4	1
San Martin	13755 Llagas Ave, San Martin	8		1
Henry Coe	10000 E Dunne Ave, Morgan Hill	2		1
Uvas Reservoir	14998 Uvas Rd, Morgan Hill	6		1
Canada & Pacheco Pass	3598 Godfrey Ave, Gilroy	1		
Total		25	4	5
updated 3/23/2024		* 3 standard plus 1 ADA porta-potty		

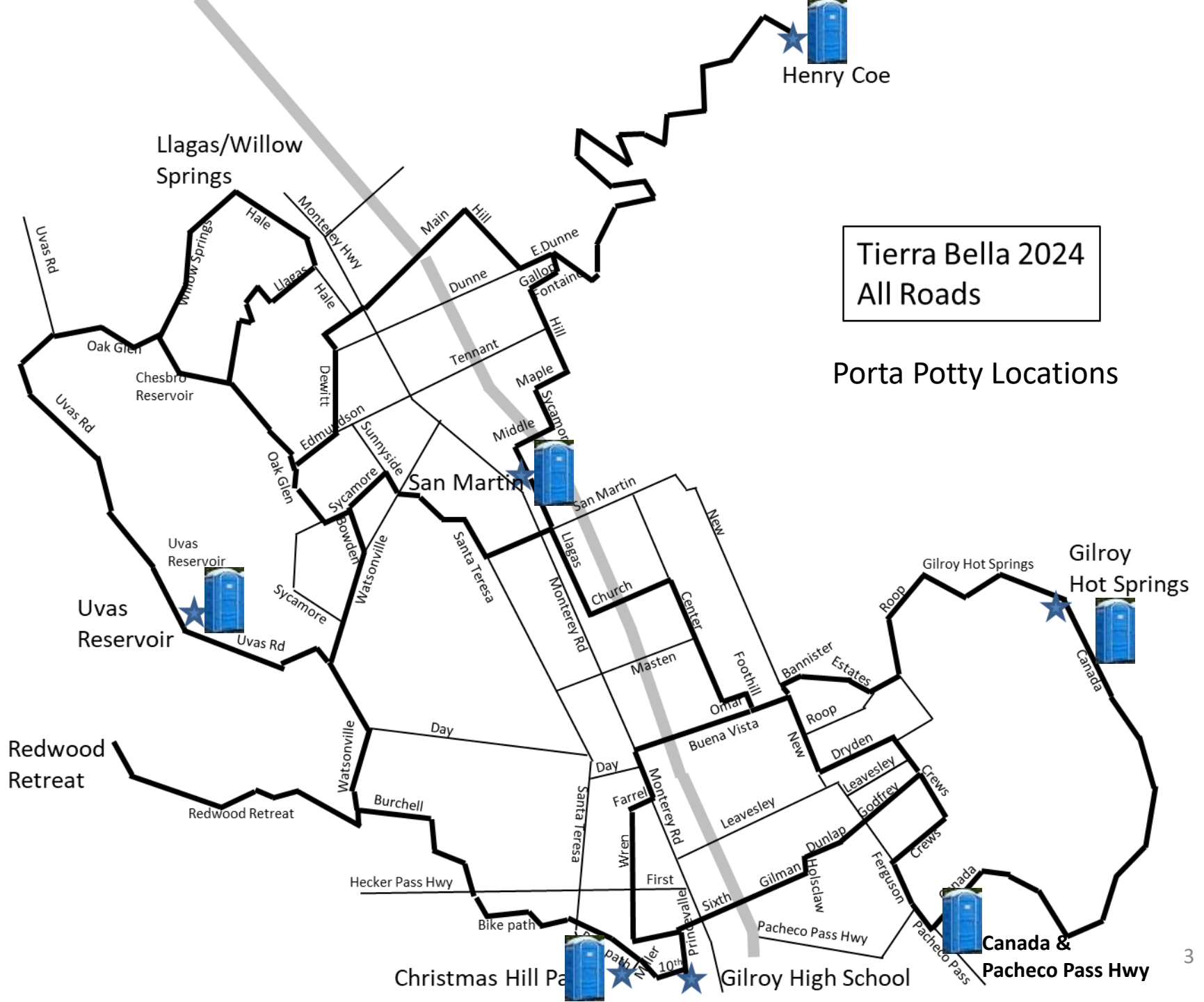
Tierra Bella 2024

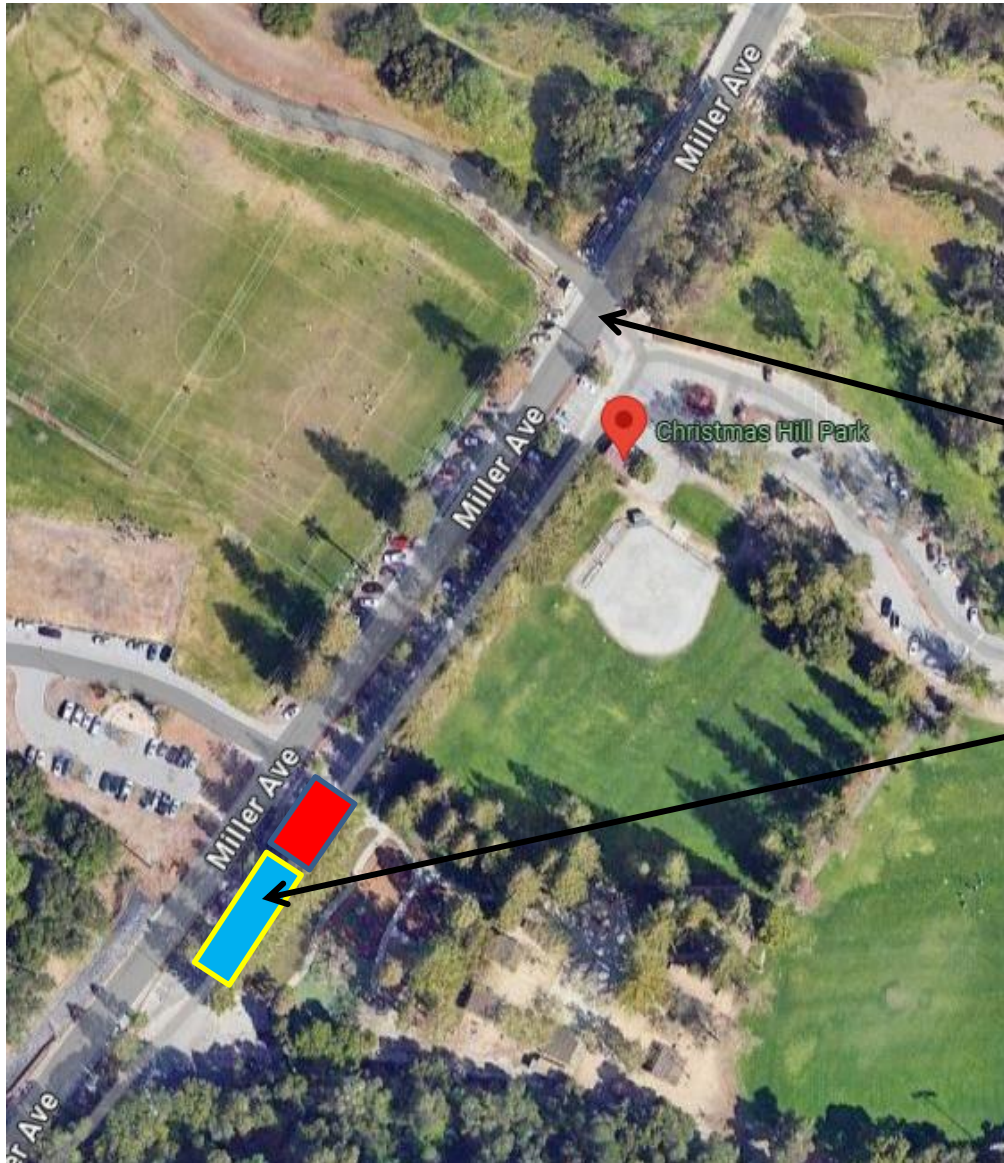
Updated 3/23/2024



Directions on How to Get There

Location	Directions on how to get there
Christmas Hill Park	inside the parking lot, at the West side (near Mulberry)
Gilroy Hot Springs	from New Ave, go 6.0 miles up Roop Road / Gilroy Hot Springs Road, to Canada Road. Place porta potties on the left, between Gilroy Hot Springs Road and the cattle guard.
San Martin	from E. San Martin Ave, go 0.4 miles north on Llagas Ave, to south end / first entrance to parking lot at Peninsula Building Supply. Put porta potties at south end of parking lot.
Henry Coe	from Hill Road, go 11.1 miles East on Dunne Ave, all of the way up the hill to Henry Coe State Park. Porta Potties go near campsite #2 in the campground.
Uvas Reservoir	from Watsonville Rd, go 2.3 miles on Uvas Rd. Put the porta potties in the County Park parking lot, near to the other ones.
Canada & Pacheco Pass	from Ferguson Road, go 0.4 mile East on Pacheco Pass Road/Hwy 152, then turn left on Canada Rd. Put porta potty on right side of Canada Road about 150 feet from Pacheco Pass Road.
updated 3/23/2024	





Christmas Hill Park

3 standard porta potties
1 ADA porta potty
1 wash station

Entrance – 7050 Miller Ave

Place porta potties in the
parking lot, next to the
handicapped parking spaces.
Near Mulberry picnic area

4 porta potties
1 wash station

Gilroy Hot Springs Reststop



Gilroy Hot Springs Road

8 porta potties
1 wash station



San Martin Reststop

Peninsula Building Supply
13755 Llagas Ave, San Martin



2 porta potties
1 wash station



Uvas Reservoir County Park Reststop

6 porta potties
1 wash station



Porta-potties (6)
1 wash station

14998 Uvas Road

Canada Road at Pacheco Pass Hwy

1 porta potty

