

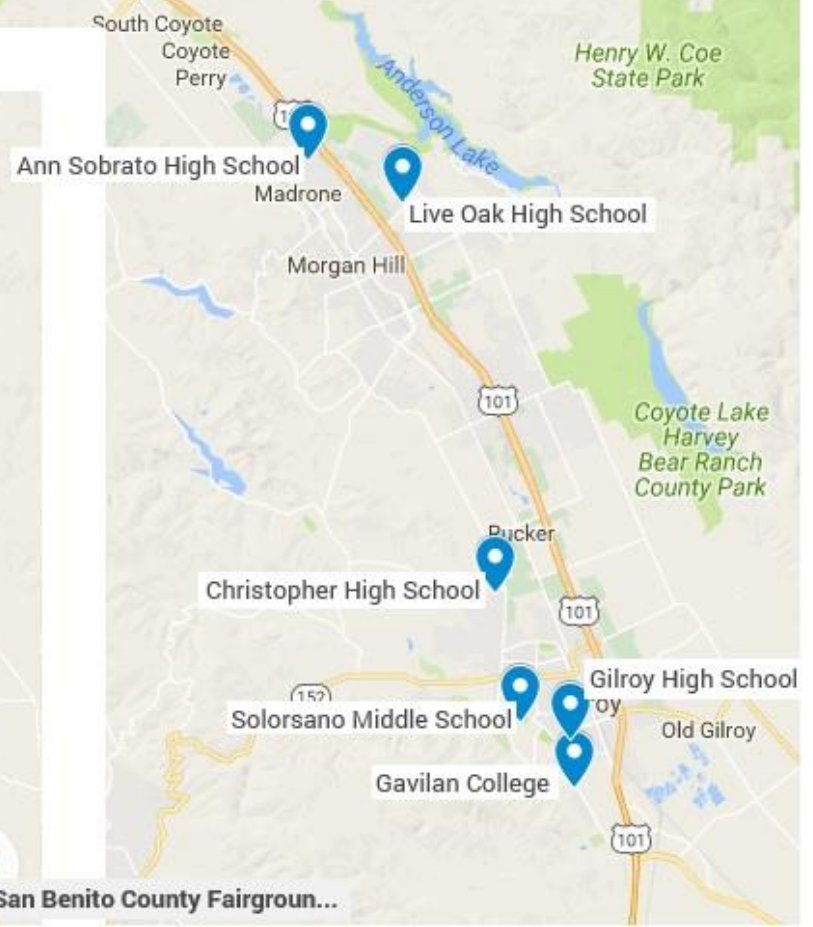
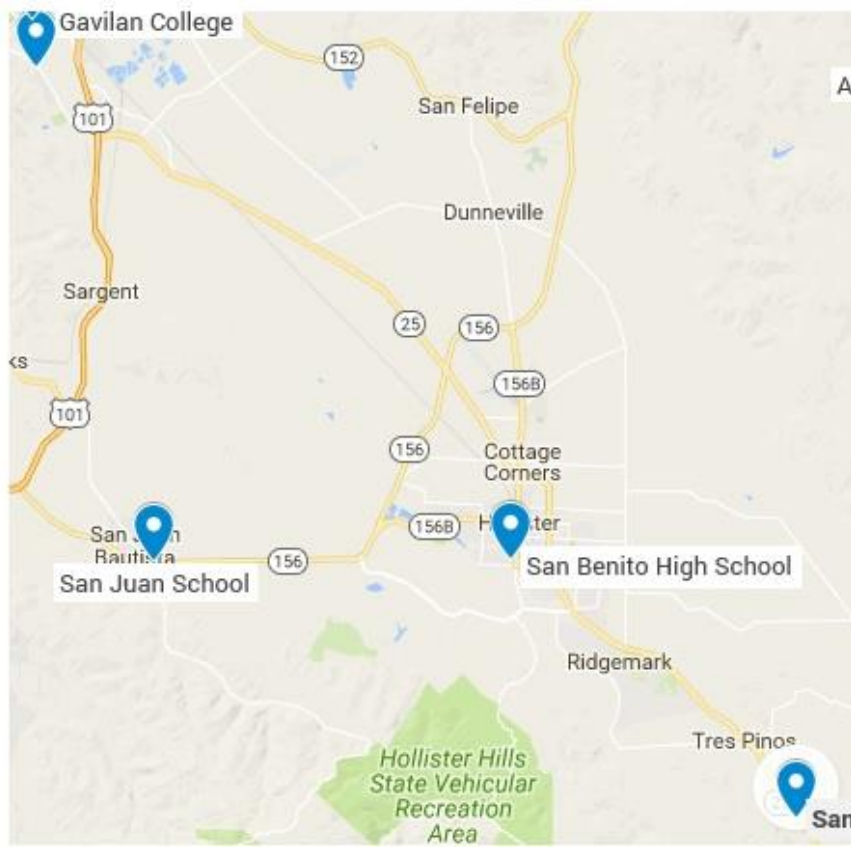
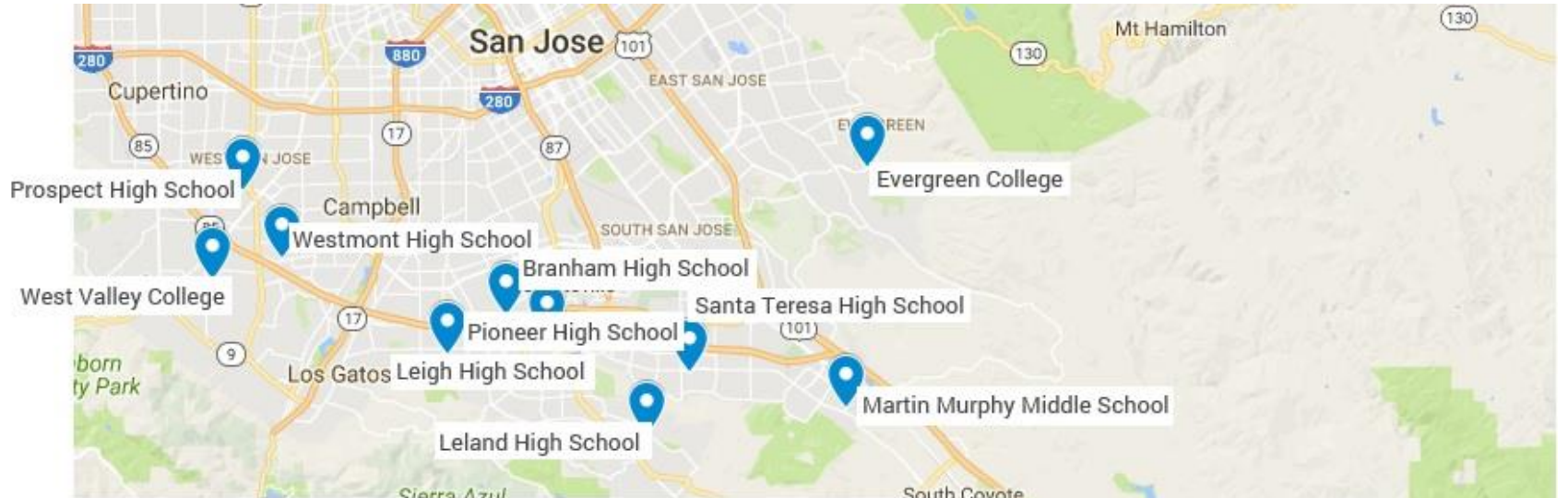
# Search for a New Start Location for Tierra Bella

- Using Google Maps, I took satellite views of each of the possible locations in the South Bay.
- I then estimated the amount of parking available at each location, then normalized it as a percentage of Gavilan's parking
- By Don Axtell 3/17/2017

Start Location	Parking Acres	% of Gavilan
Gavilan College	9.47	100%
Evergreen College	18.06	191%
West Valley College	24.74	261%
Gilroy High School	4.00	42%
Christopher High School	4.14	44%
Live Oak High School	4.39	46%
Ann Sobrato High School	4.76	50%
Leland High School	3.30	35%
Branham High School	3.35	35%
Santa Teresa High School	2.82	30%
Pioneer High School	4.89	52%
Westmont High School	3.82	40%
Prospect High School	2.78	29%
Leigh High School	4.20	44%
Solorsano Middle School	1.54	16%
Martin Murphy Middle School	1.88	20%
San Juan School	1.95	21%
San Benito High School	2.08	22%
San Benito County Fairgrounds	11.37	120%

Start Location Map (see next slide) =

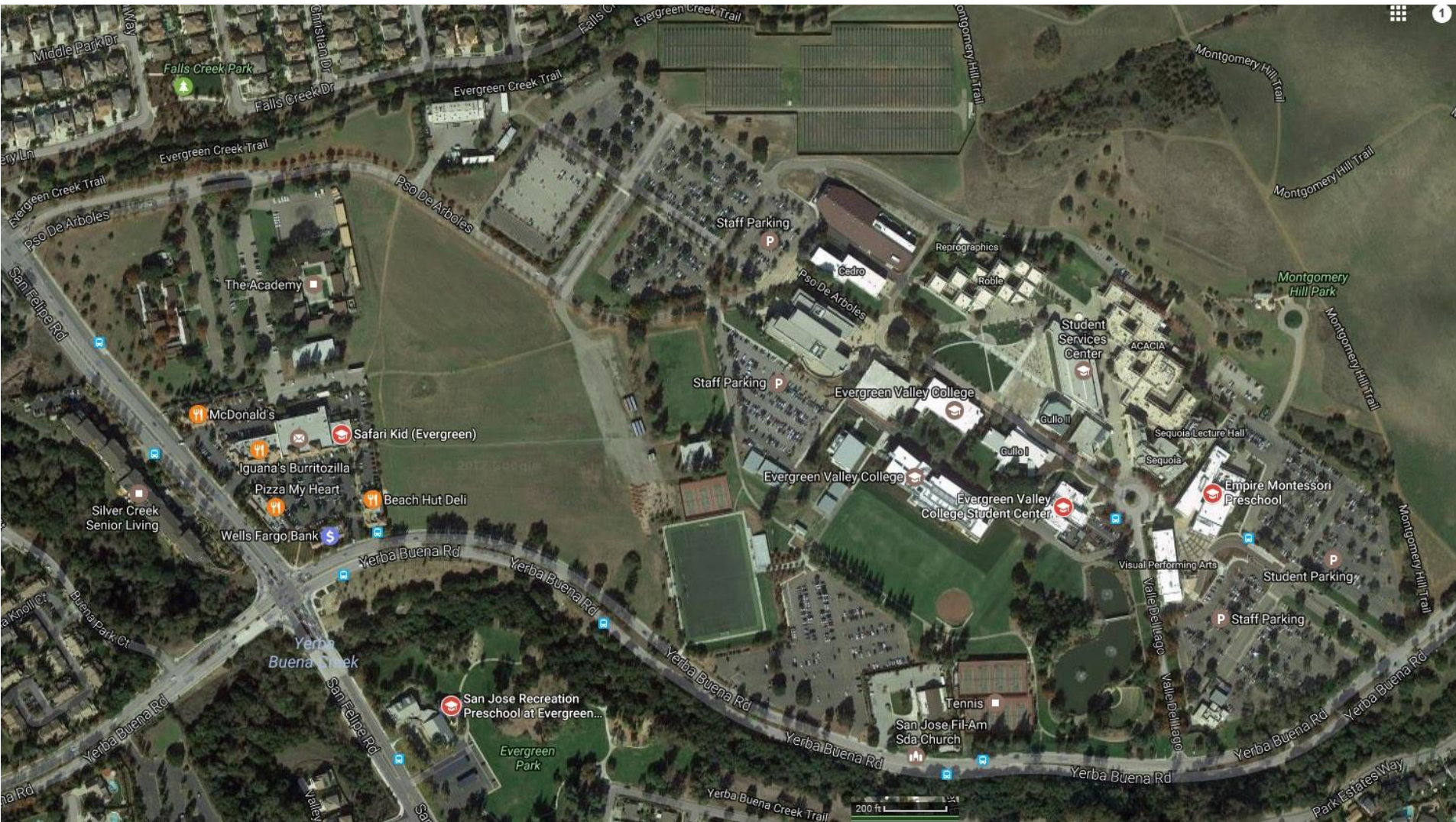
<https://drive.google.com/open?id=13FebWYgR0rMP1mcoU4iG7bSxljU&usp=sharing>



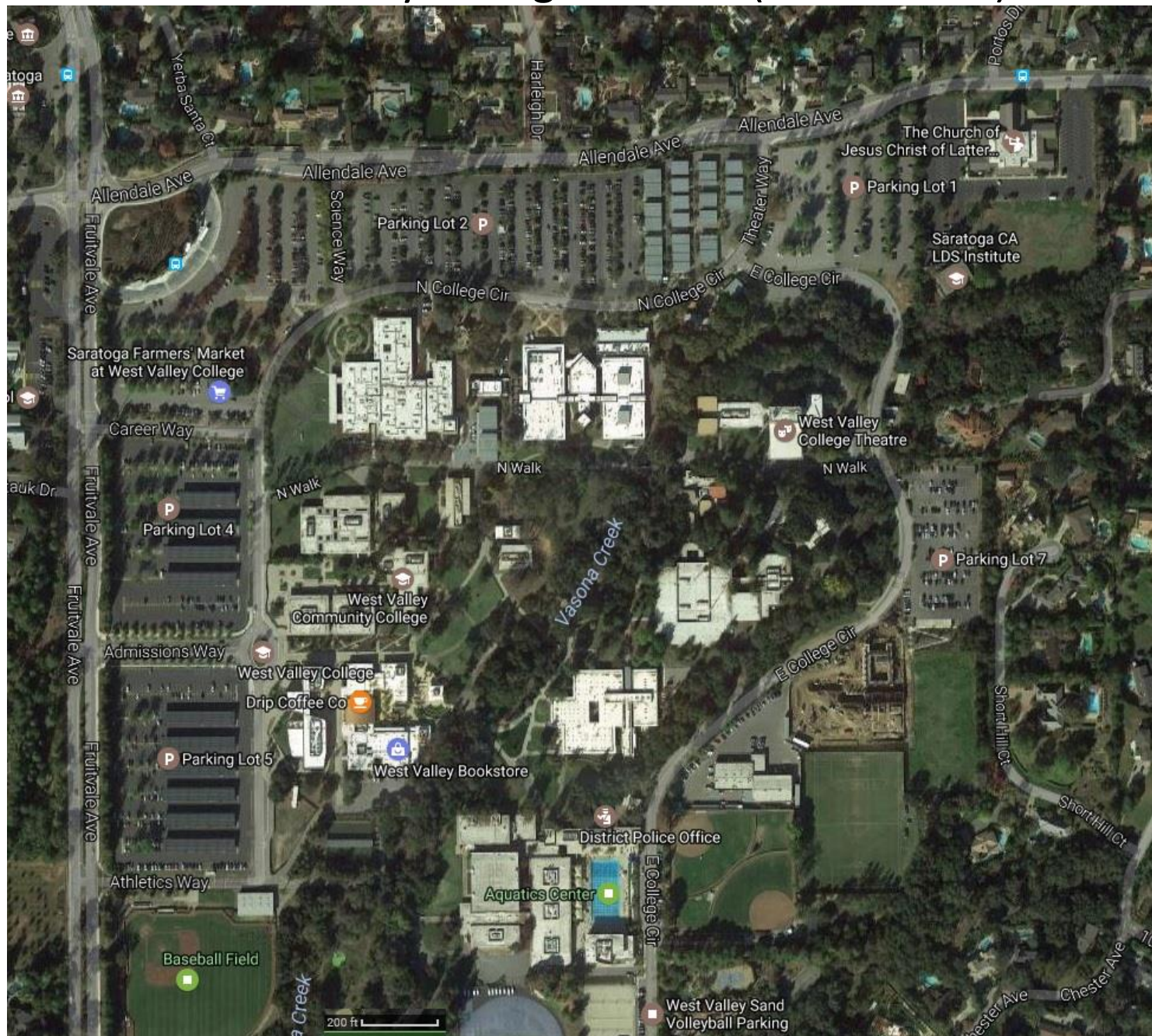
# Gavilan College – 100% (9.47 acres)



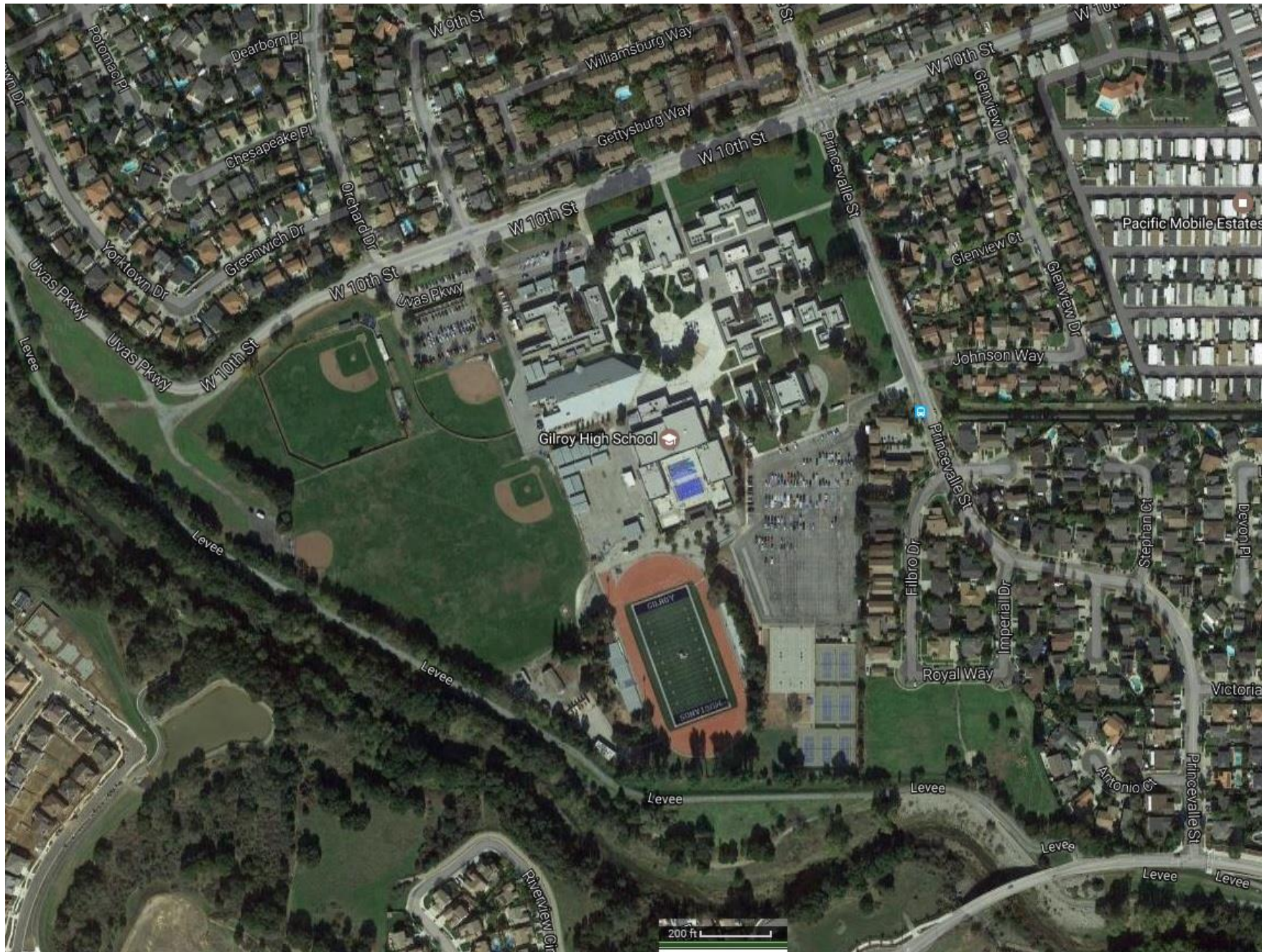
# Evergreen College – 191% (18.06 acres)



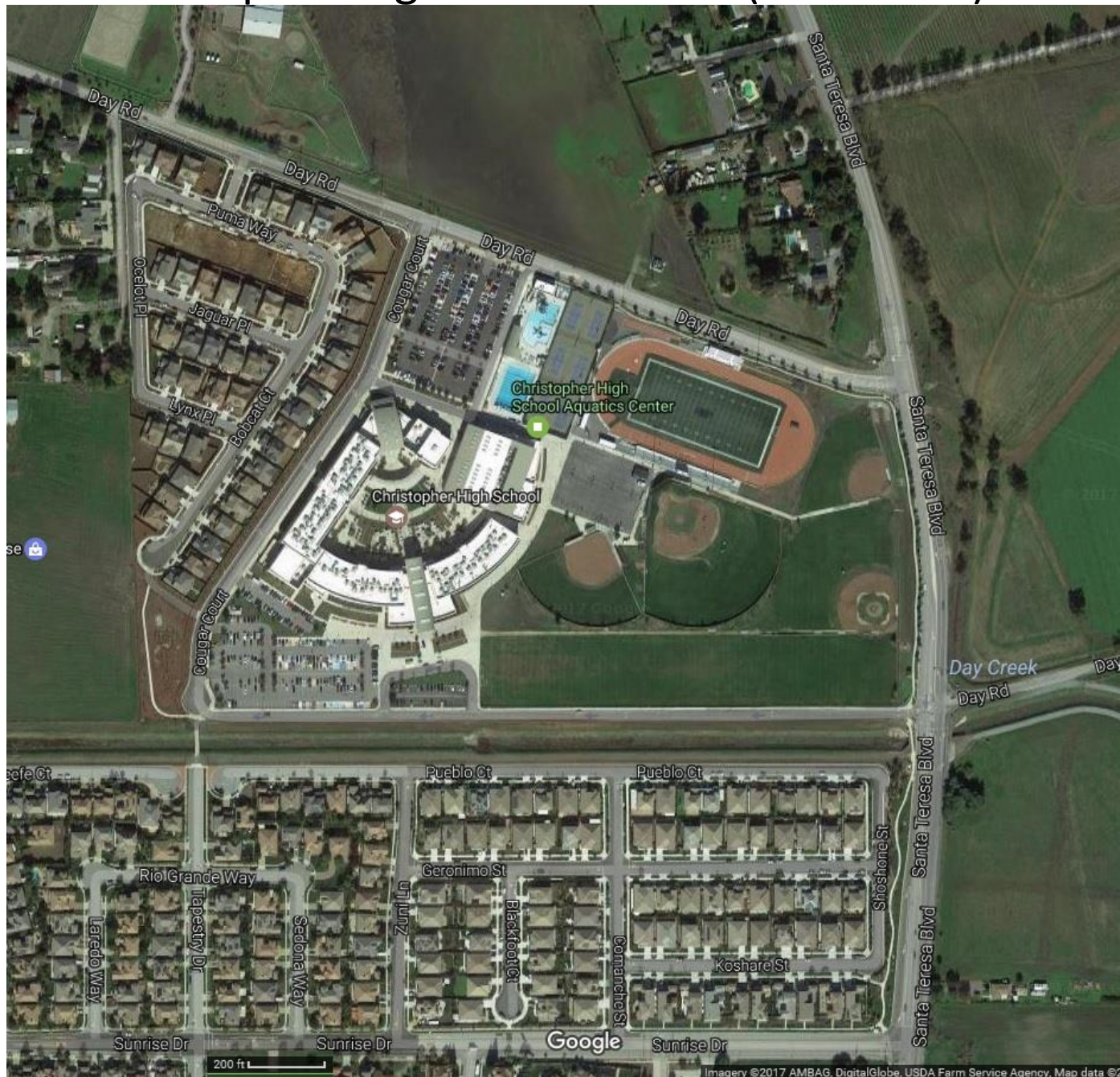
# West Valley College – 261% (24.74 acres)



# Gilroy High School – 42% (4.00 acres)



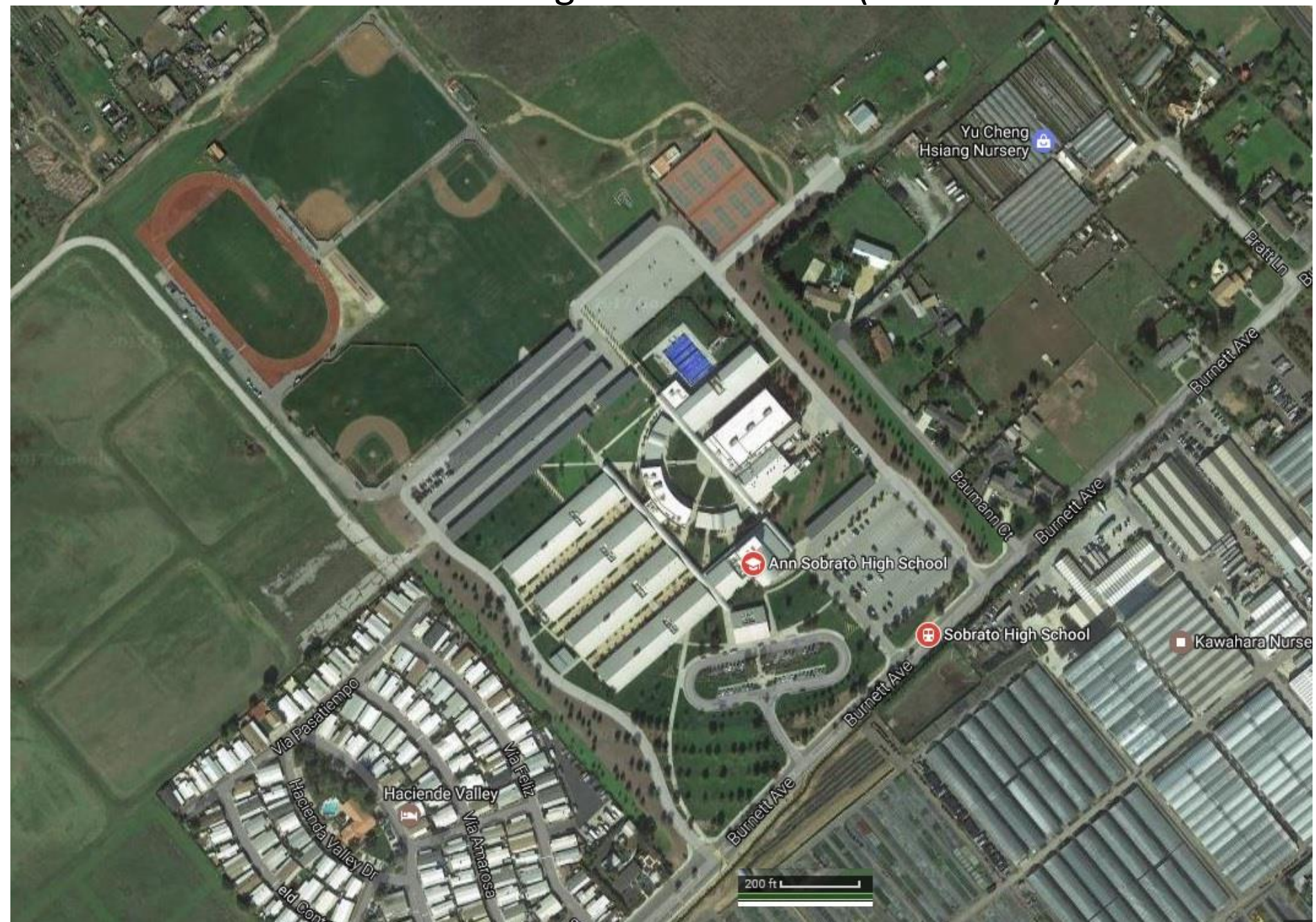
# Christopher High School – 44% (4.14 acres)



# Live Oak High School – 46% (4.39 acres)



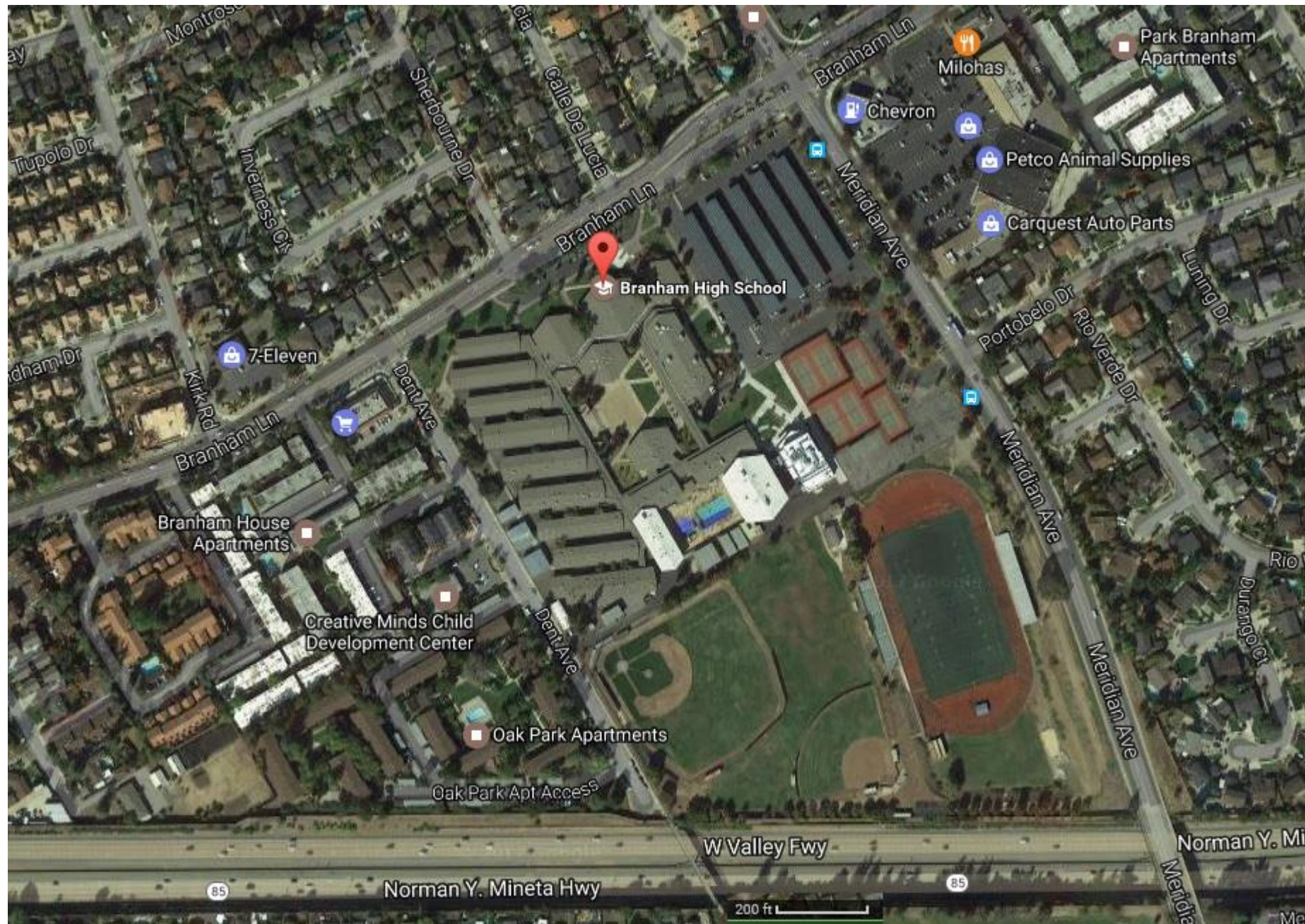
# Ann Sobrato High School – 50% (4.76 acres)



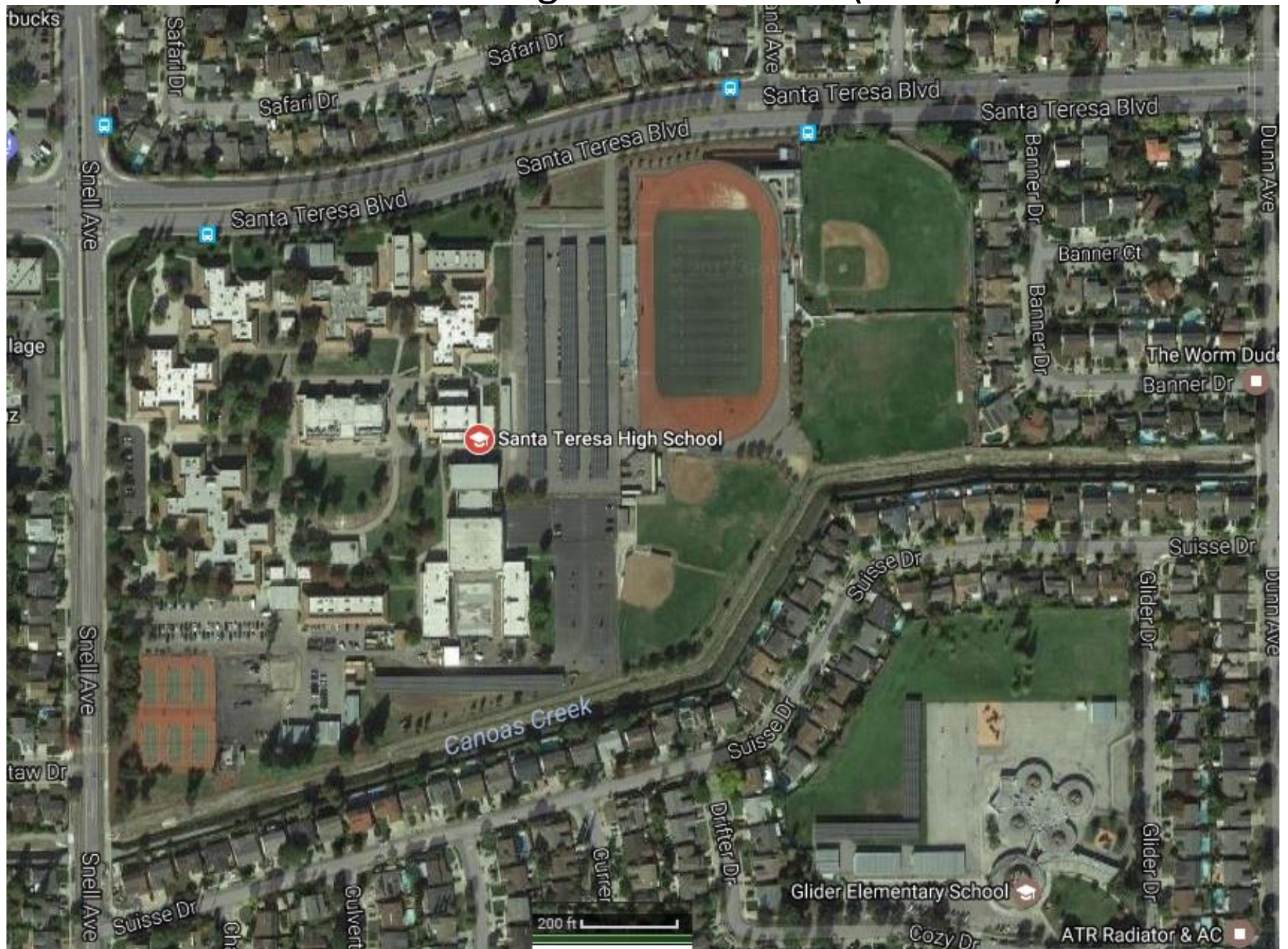
# Leland High School – 35% (3.30 acres)



# Branham High School – 35% (3.35 acres)

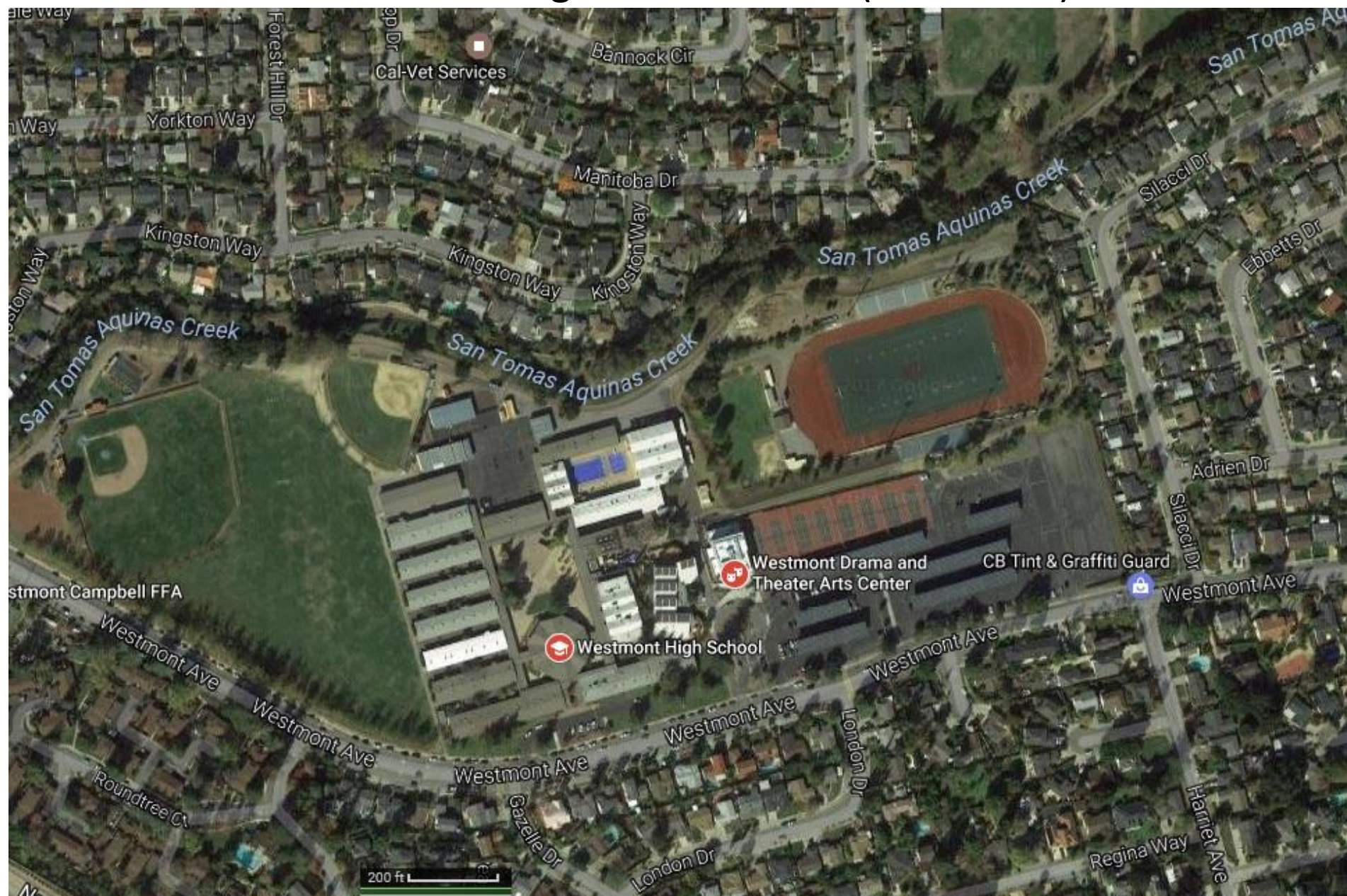


# Santa Teresa High School – 30% (2.82 acres)

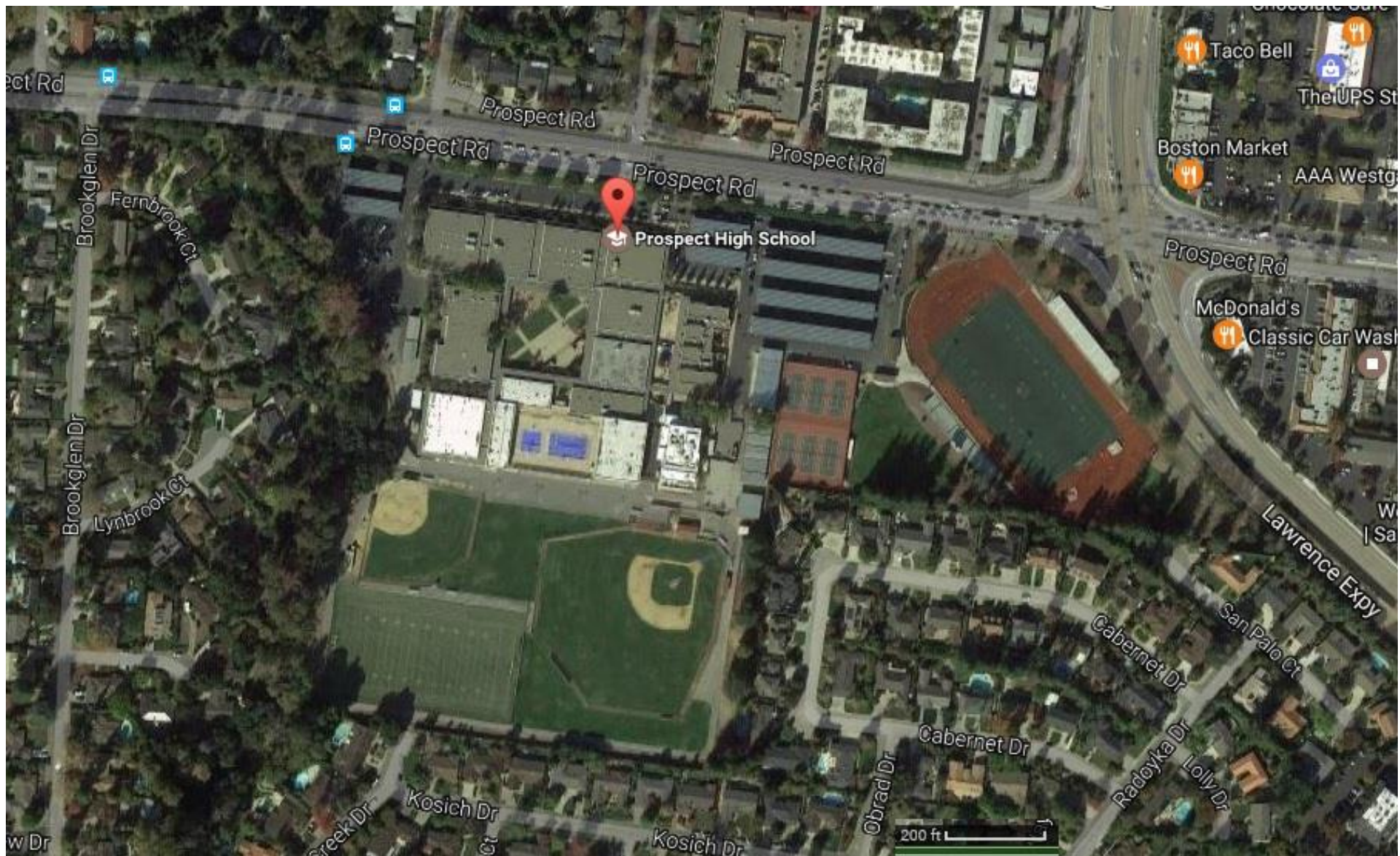


This aerial view shows Pioneer High School, a large educational facility with a prominent blue roof. The school is located in a suburban area with surrounding residential streets including Blossom Hill Rd, Hoffman Ct, Croydon Ave, Coniston Way, and Ashcroft Ln. To the right of the school, there are two baseball fields. The area is bordered by Blossom Hill Rd to the north and Almaden Expy to the east. A scale bar at the bottom indicates 200 ft.

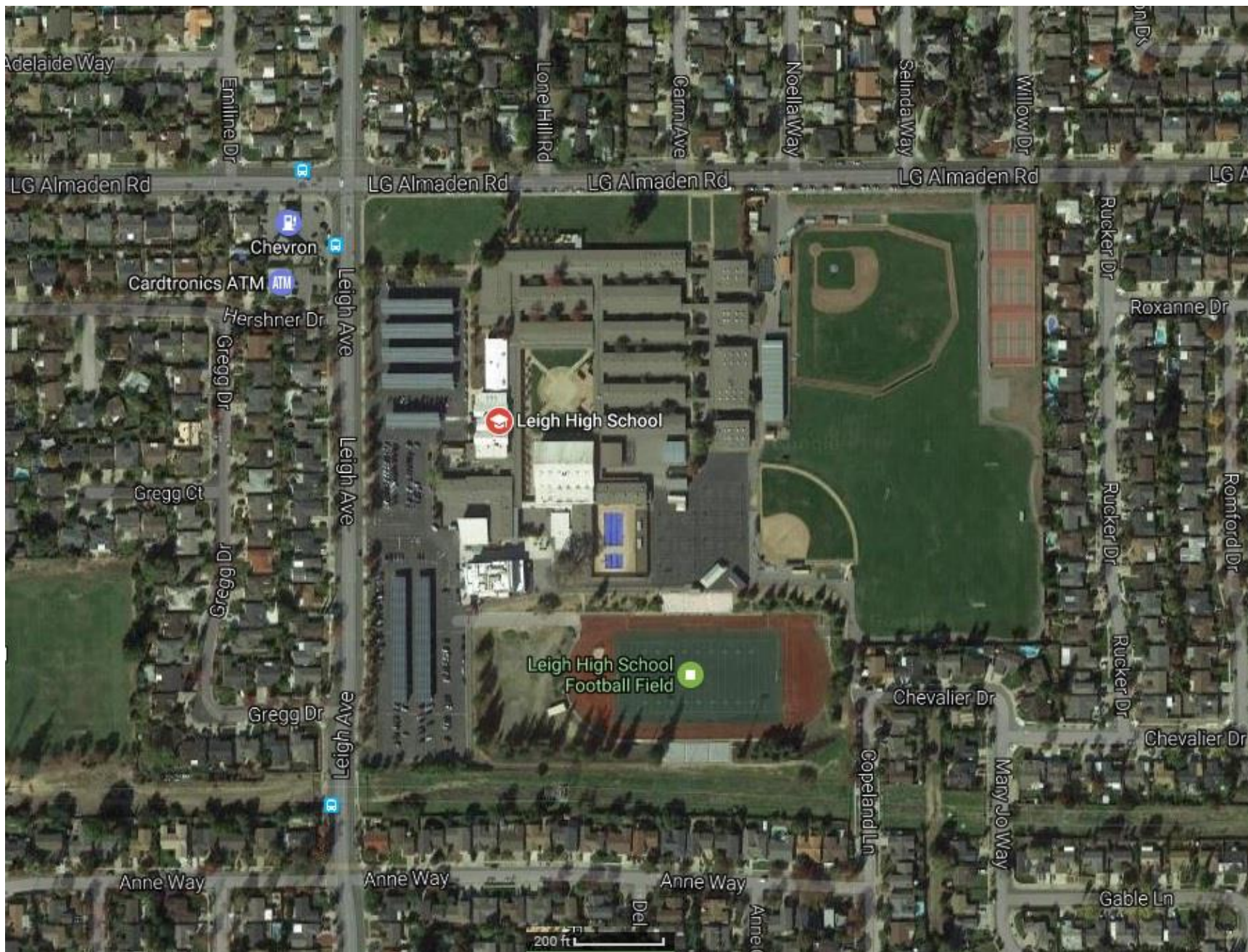
# Westmont High School – 40% (3.82 acres)



## Prospect High School – 29% (2.78 acres)



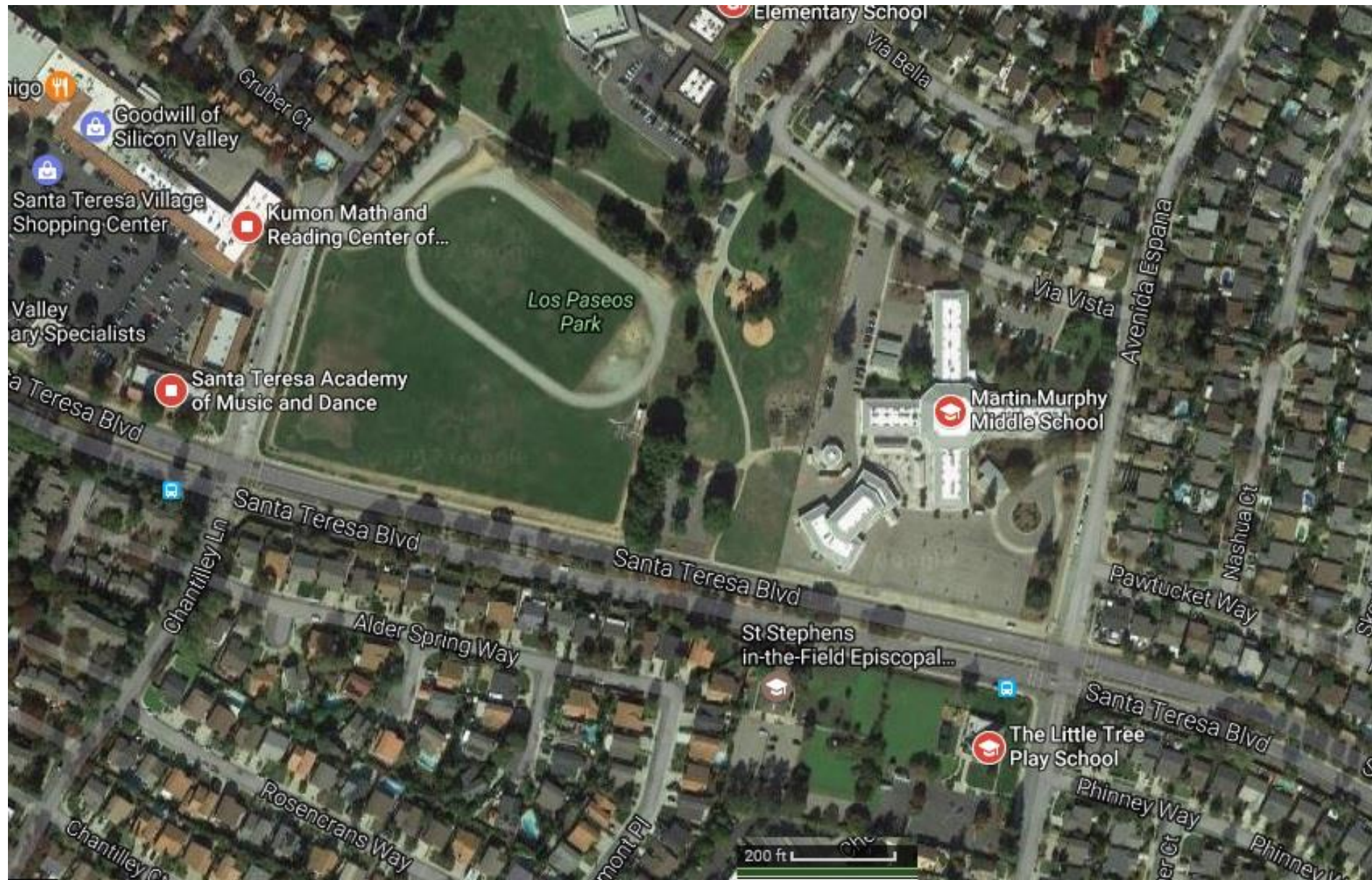
# Leigh High School – 44% (4.20 acres)



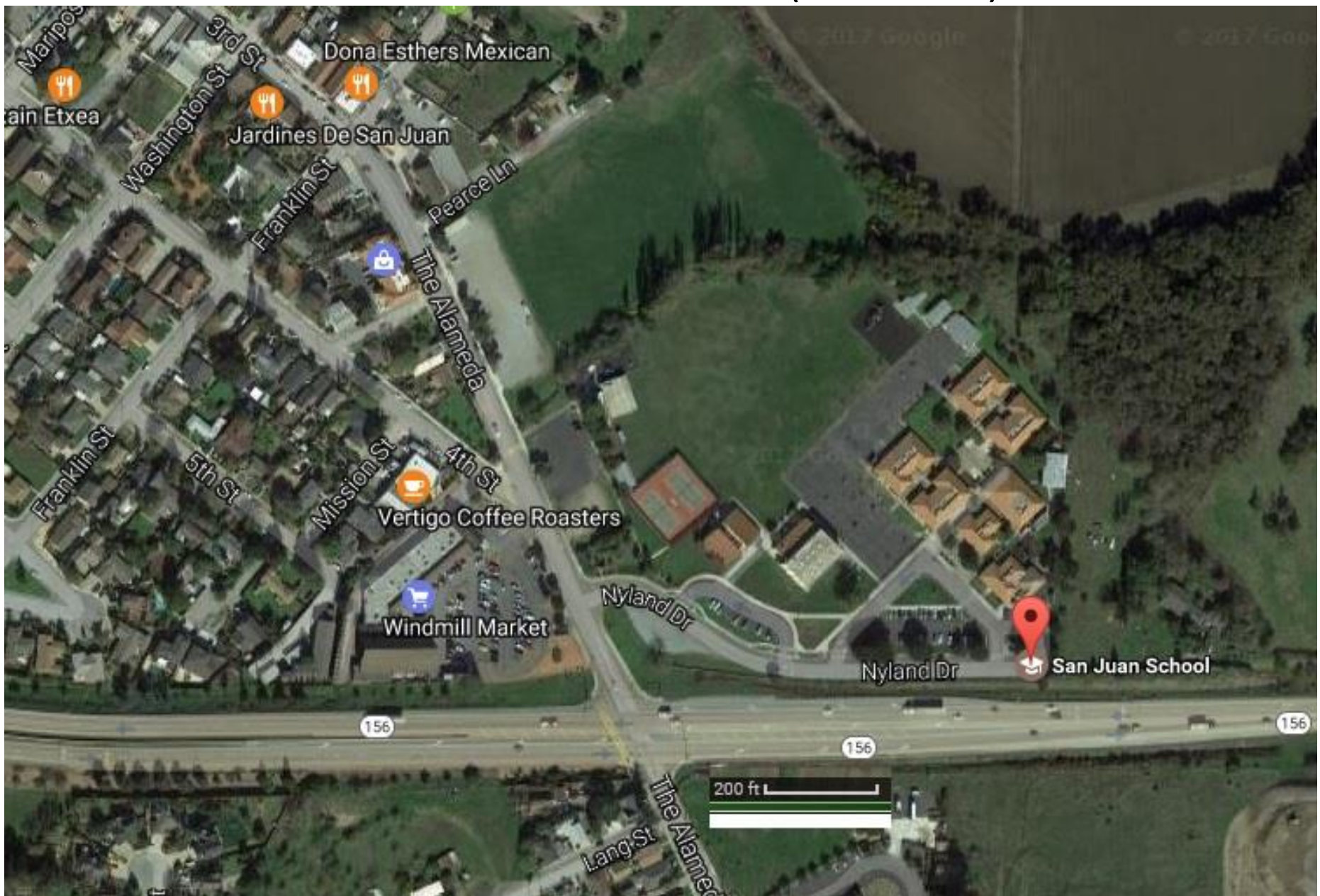
# Solorsano Middle School – 16% (1.54 acres)



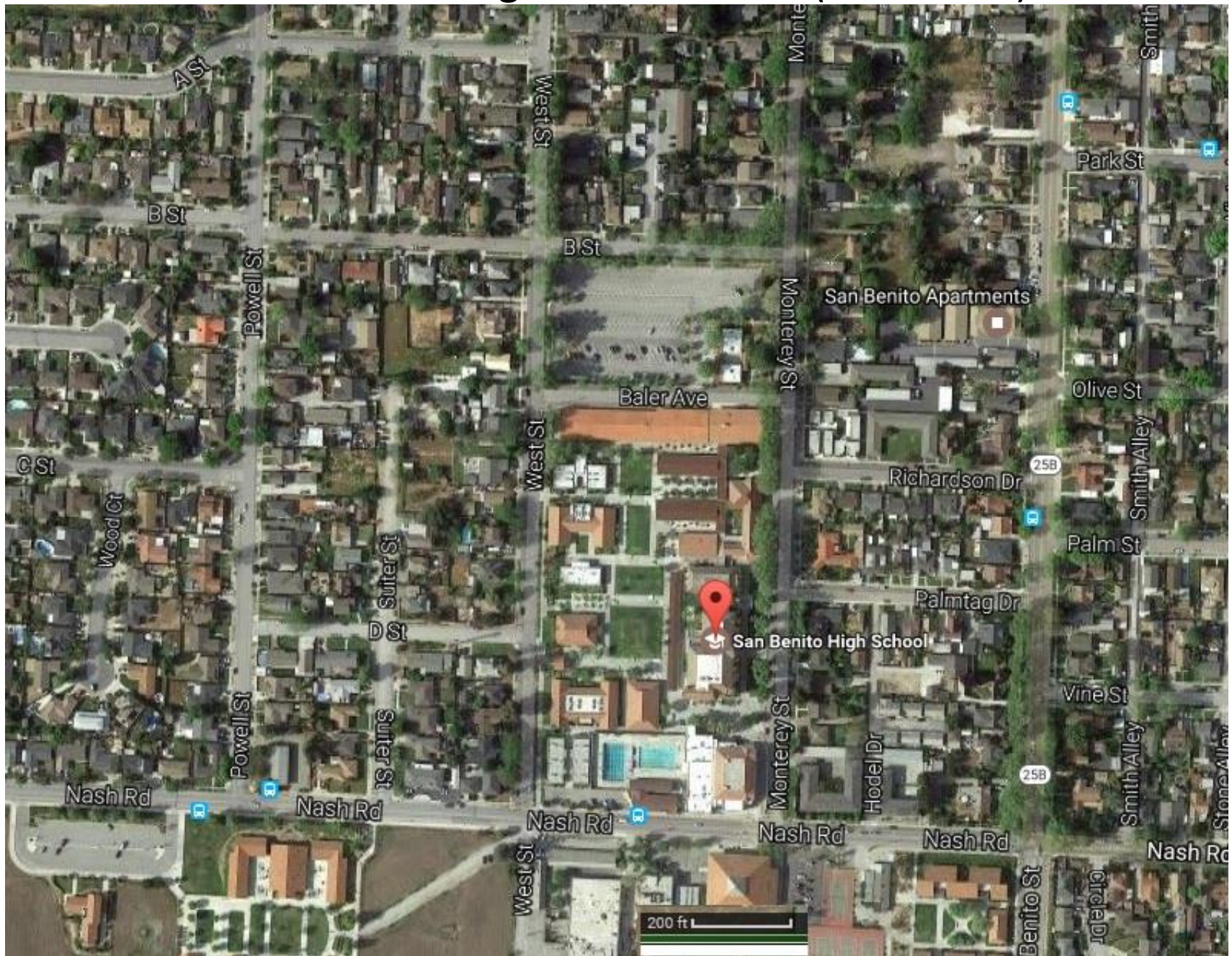
# Martin Murphy Middle School – 20% (1.88 acres)



# San Juan School – 49% (4.64 acres)



# San Benito High School – 22% (2.08 acres)



# San Benito County Fairgrounds – 120% (11.37 acres)

